

A Review of Valsson's Predictions
on Changes in Structures of the Globe

... published 2006, in his book:

***“How the World will Change
- with Global Warming”***

(A review in 2019, ... 13 years after the book was published)

How

THE WORLD WILL CHANGE

with Global Warming

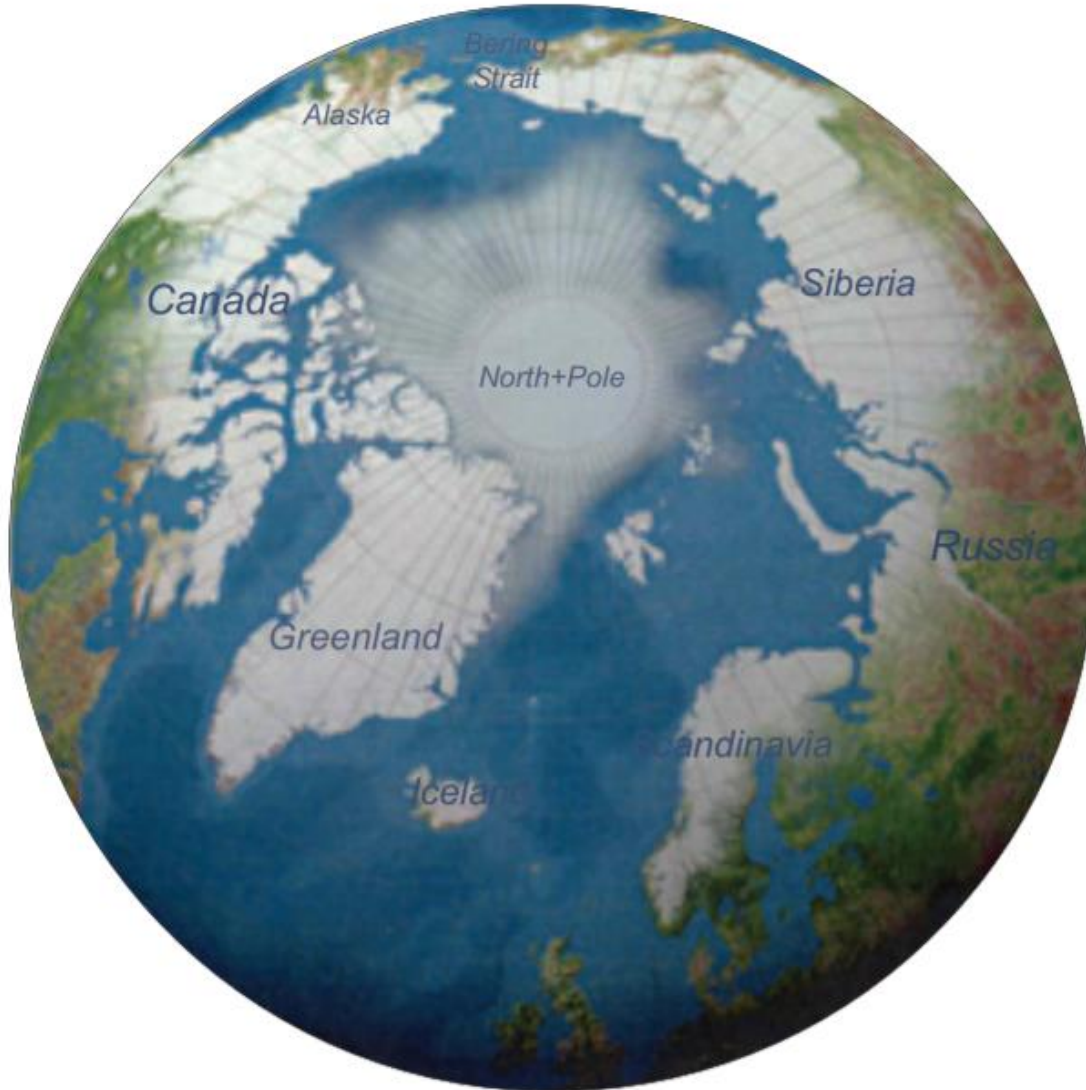
*A daring perspective on the
climate change debate, high-
lighting opportunities that may
come about...*

*Gunnar Petsson, Ambassador
and Chairman of AC, Official*

*Provoking and refreshing
...introduces a historic-
geographical perspective in the
discussion focusing on possibilities.*

*Ulf Dunninger
Director of Nordregio*





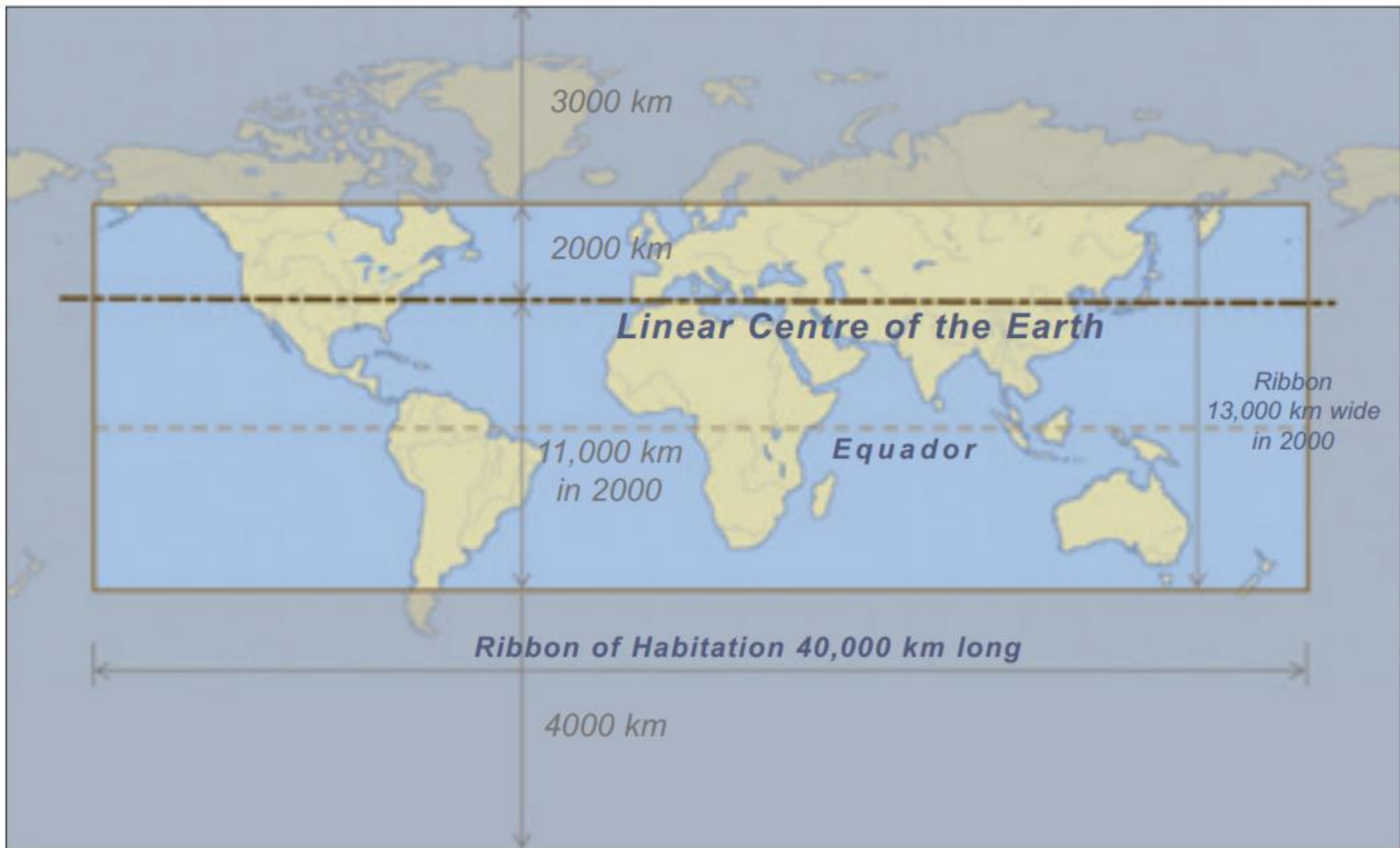
**The grey areas on the map,
are today difficult for
habitation.**

***Global warming will make
them important for the
future (HowWorld p.7)***



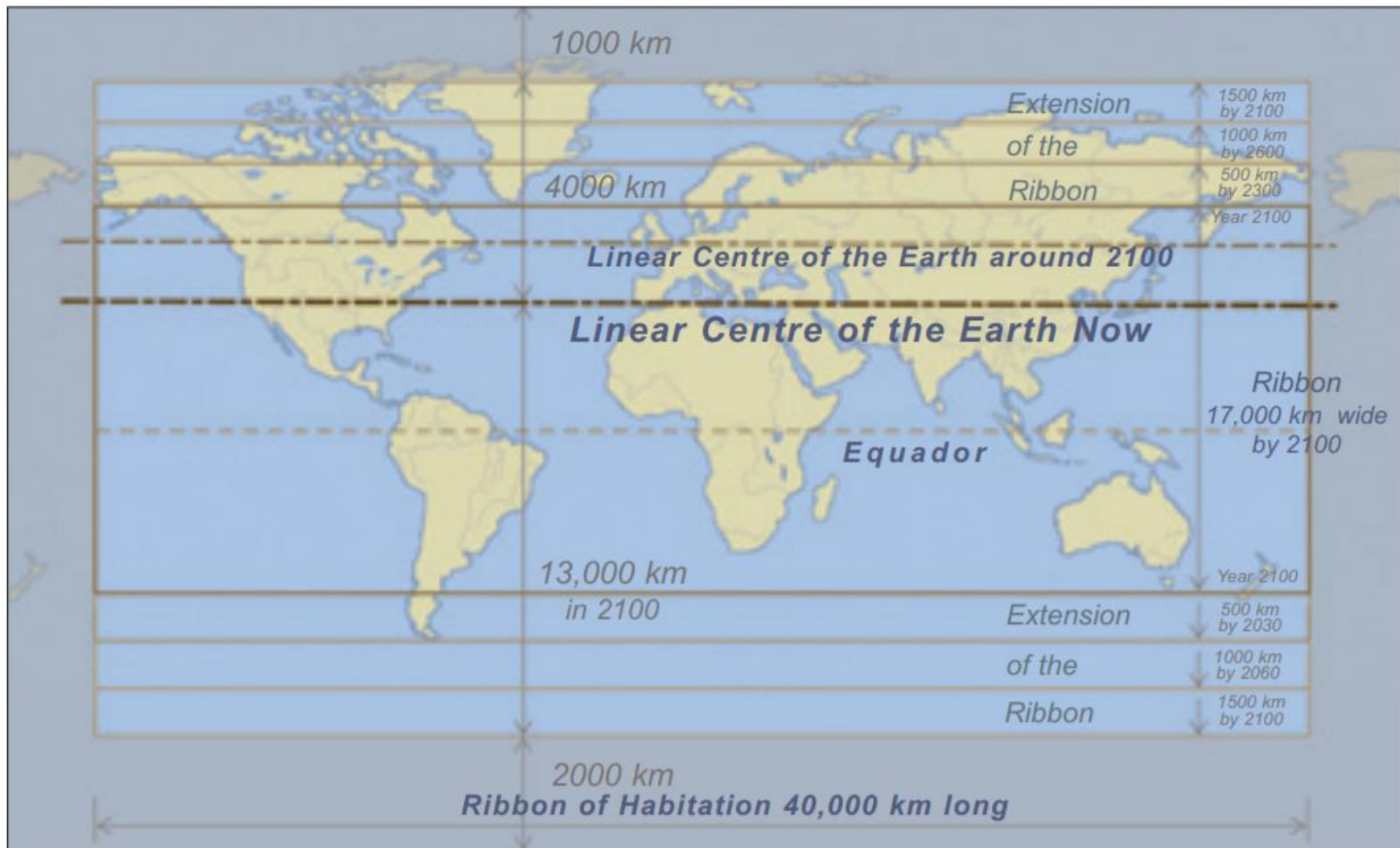
Migration South to North
will become problematic
(HowWorld p.57)

**(In 2006 there were still
few problems... but that
was to change)**



The Ribbon of Earth's Habitation...

... and the location of today's Linear Centre of Earth (*HowWorld p.61*)



The picture presents a prediction...
 ... on how much the Ribbon of Habitation
 will expand into the Polar Areas in this century (*HowWorld p.61*)

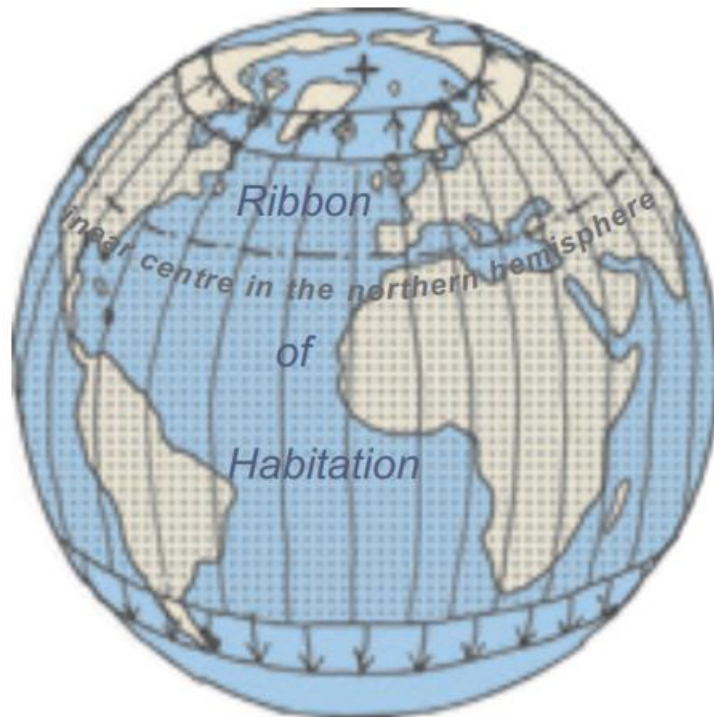


As the Arctic Ocean becomes ice free the whole year...

these will be main shipping routes through the Arctic Ocean

(HowWorld p.61)

The Development of the Spatial Systems of Earth (HowWorld p.65)



Ribbon of habitation: Extension to the poles. Points at the linear centre most important



Polar flights and cyberspace: Points become more equal again. Peripheral areas gain most



Centre of Earth becomes very warm:
The ribbon splits in two. Movement
 towards the poles

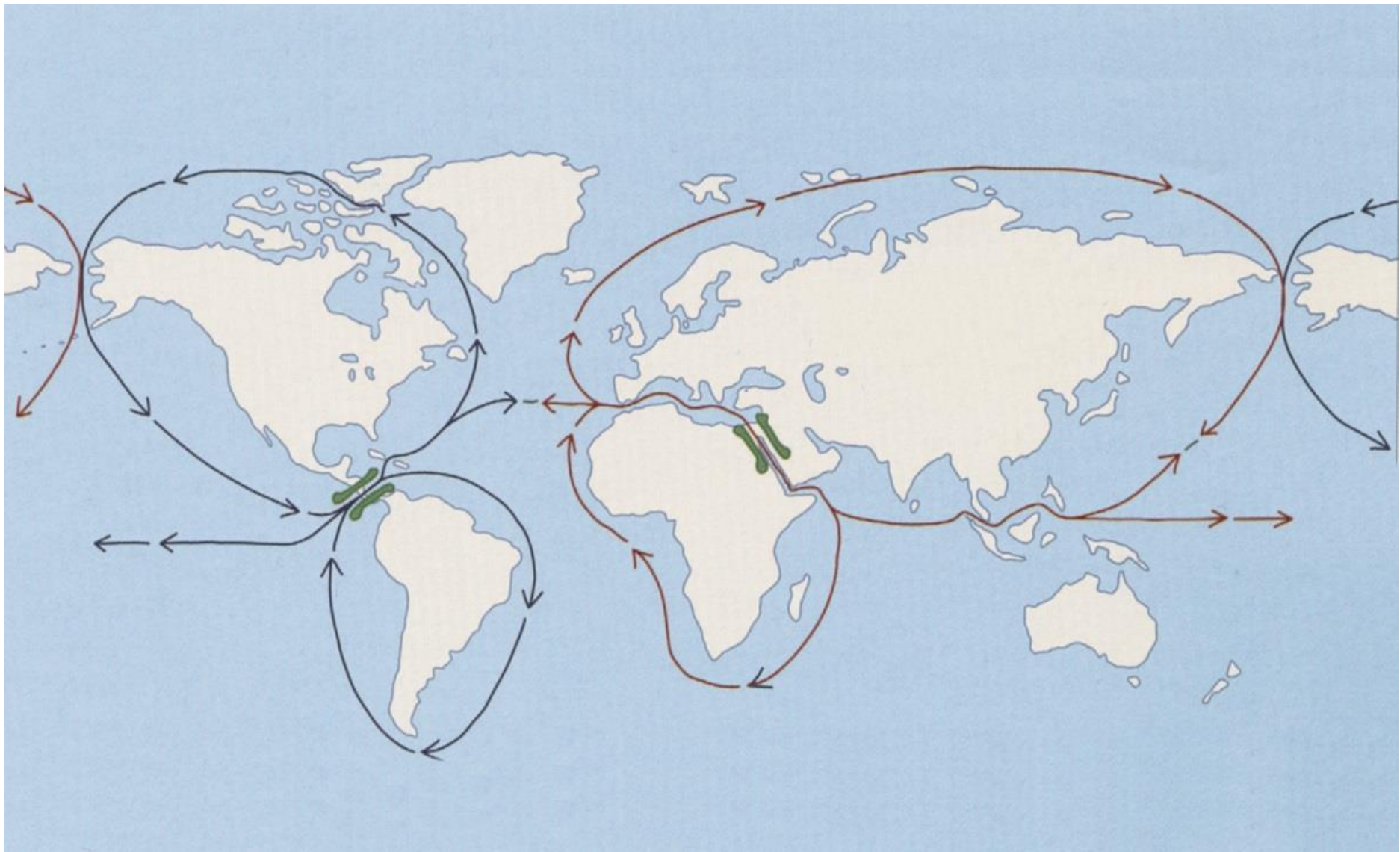


The South loses importance: The North Pole becomes a symbolic Centre of the World (HowWorld p.65)

(This prediction will only come true... if Global Warming becomes very extensive)



An estimation of *what will be the most active areas* of the North
... with extensive Global Warming (HowWorld p.66)



TV's Prediction 2006: Ice-free Arctic will allow global circular shipping there ... in the near future (HowWorld p.82)

TV started his studies on consequences of Global Warming in his book “Land sem auðlind” (“Land as Resource”) ... in 1993 for SW-Iceland



*SW-Iceland –
Green: Agro-areas
that will extend*

*Redish: Areas
likely to be
engulfed by the
ocean*

(ShFut p.78)