

1 Planning on Six Levels:

1.1 Reykjavik Planning

1.2 Reykjavik Capital Area

1.3 SW-Iceland

1.4 Iceland Plan

1.5 Europe Plan Patterns

1.6 Global Megapatterns

1.1 Reykjavik Planning

1.1.1 Planning History Studies

Book: *Reykjavik – Vaxtarbroddur*, 1986

(Planning History of Reykjavik)... *The plan of 1948 has all the worst faults of modern planning* (PlanIcel p.133)

Book: *Planning in Iceland*, 2003... *Moving Institutions into the Reykjavik Area*, p. 108; *The Consequences of the Depression and Military Occupation* (PlanIcel p.129)

***Planning: A Way to Meet Higher Environmental Standards* (PlanIcel p.380)**

1.1.2 Predictions on the Future

Book: *Reykjavik – Vaxtarbroddur, 1986* (Plan. History of Reykjavik)

Book: *Shaping the Future, 2016* (ShFut p.79):

TV's Predictions on the Future in 1986 (RVax p.143):

- *Houses offer flexibility;*
- *Fewer high rises for residences;*
- *Electric cars, bicycle- and walking paths, less traffic;*
- *Revolution in communications;*
- *Fewer traffic negatives, cheaper road systems, etc.*

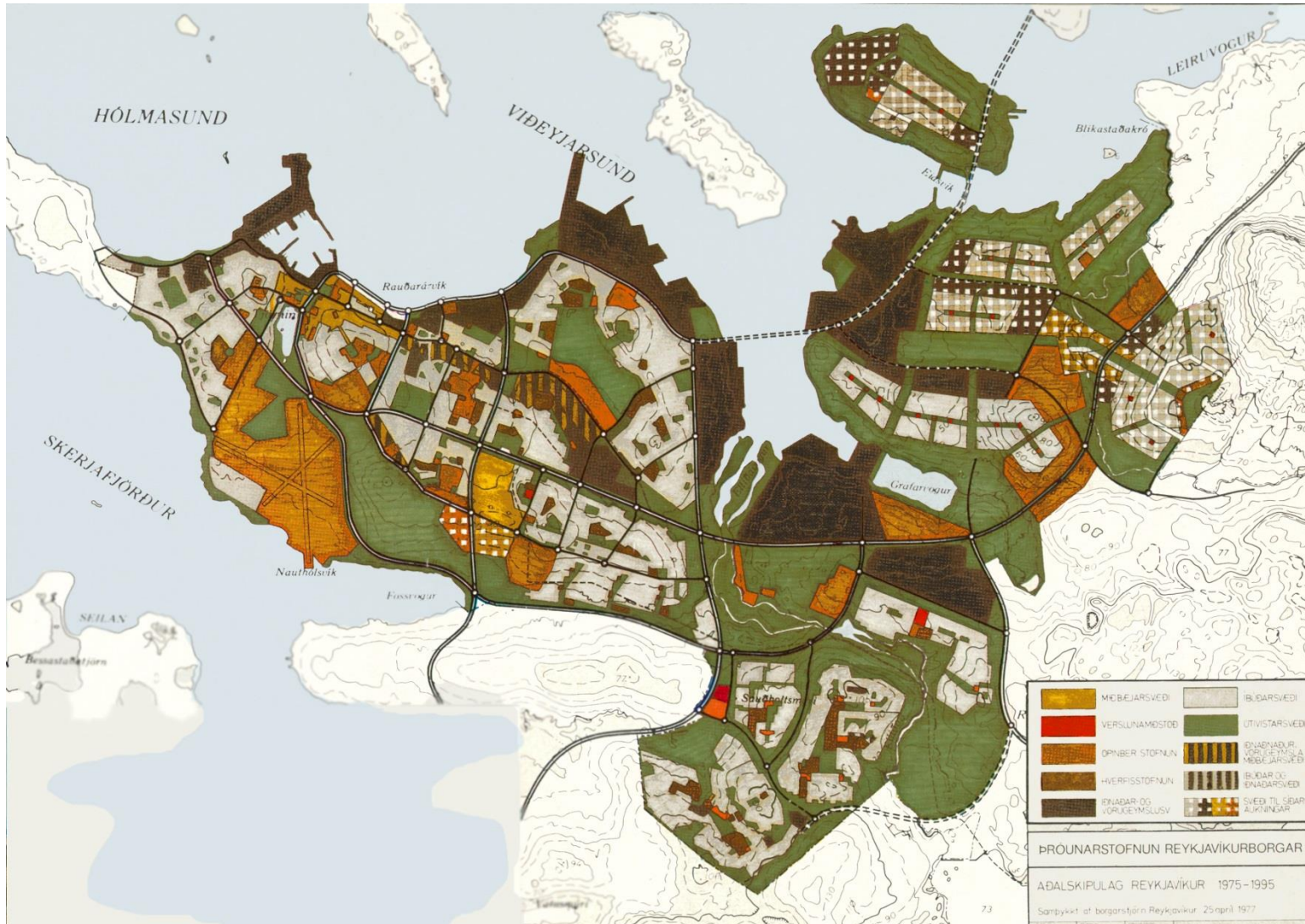
1.1.3 Overlay Maps for Future Areas



**A Plan Based on
*Pos/Neg
Evaluation Maps*
Here: *Best View***

(ShaFut p.61)

1.1.4 Master Plan Reykjavik 1977



**This 1977
Plan-Proposal**

**... improved the
“Danish Plan
of 1965”**

(ShaFut p.68)

1.1.5 Master Plan for the NE-Areas

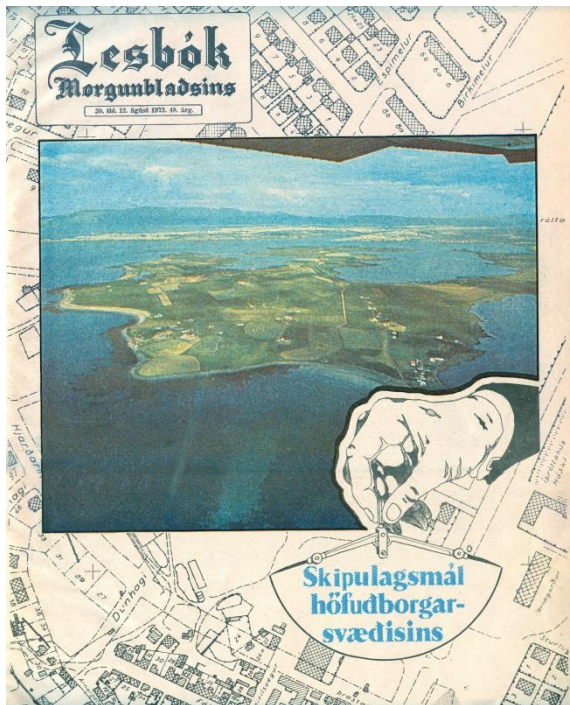


*TV led the making
of Evaluation Maps
... and a proposal for
The Master Plan
... for the area
NE of Grafarvogur*

(ShaFut p.61)

1.2 Reykjavik Capital Area

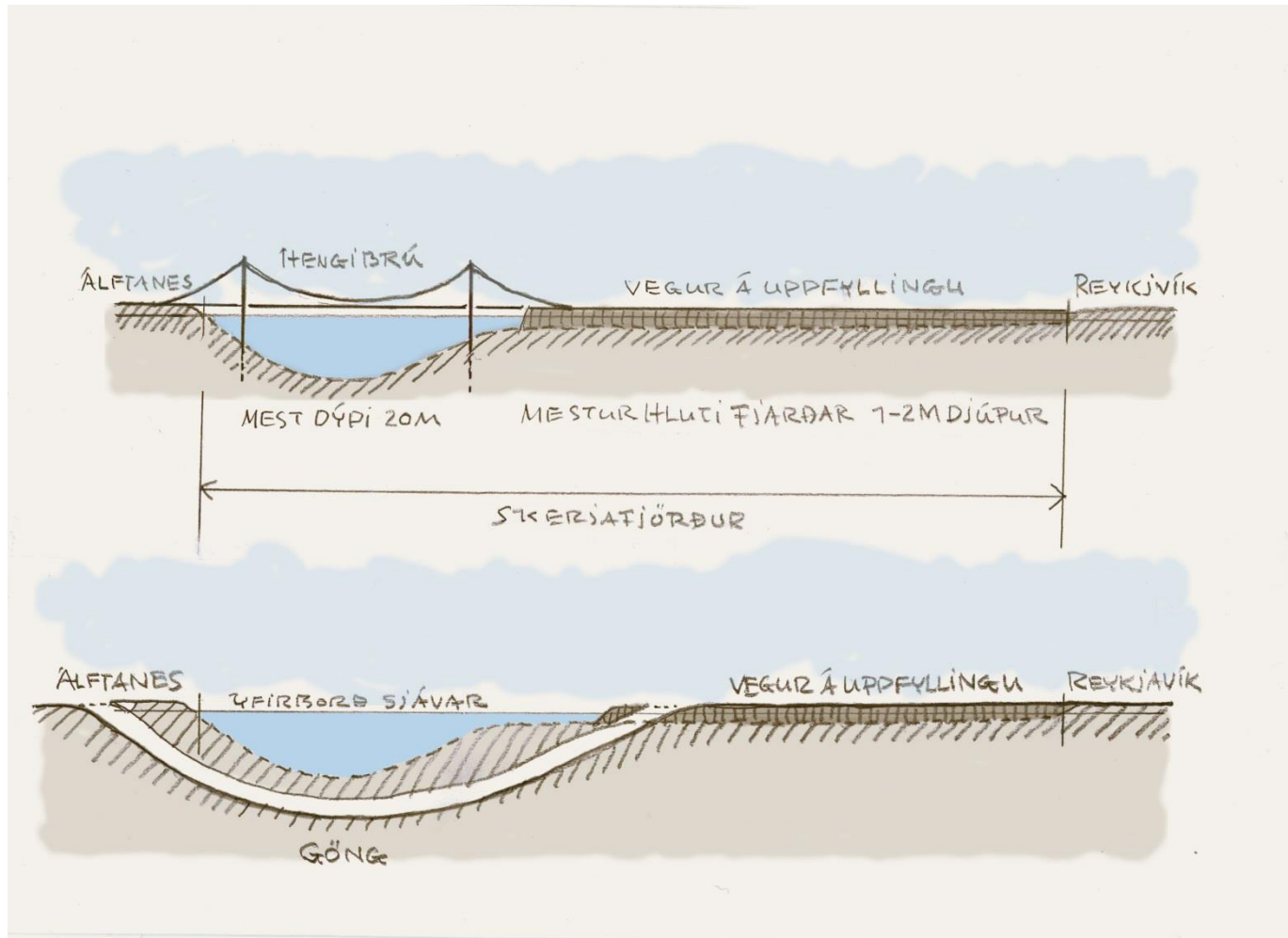
1.2.1 Highways In-front and Behind the Settlements



TV: *It is important to connect the peninsulas
... and to take traffic out of settlement areas*

(ShaFut p.69)

1.2.2 Bridges Connecting Peninsulas



TV: Connecting the peninsulas

... Landfill/bridge is inexpensive

... tunnel is not

(ShaFut p. 69-70)

1.2.3 New Airport on Long Skerries



*TV's idea on
a new airport
on the Skerries
... in the heart of
the Capital Area
was a sensation
in 1975*

(ShaFut p.72)

Inflight- and noise areas are over the ocean (ShaFut p.70)

1.2.4 The Area Should Approach a Circle Instead of Being Long-stretched

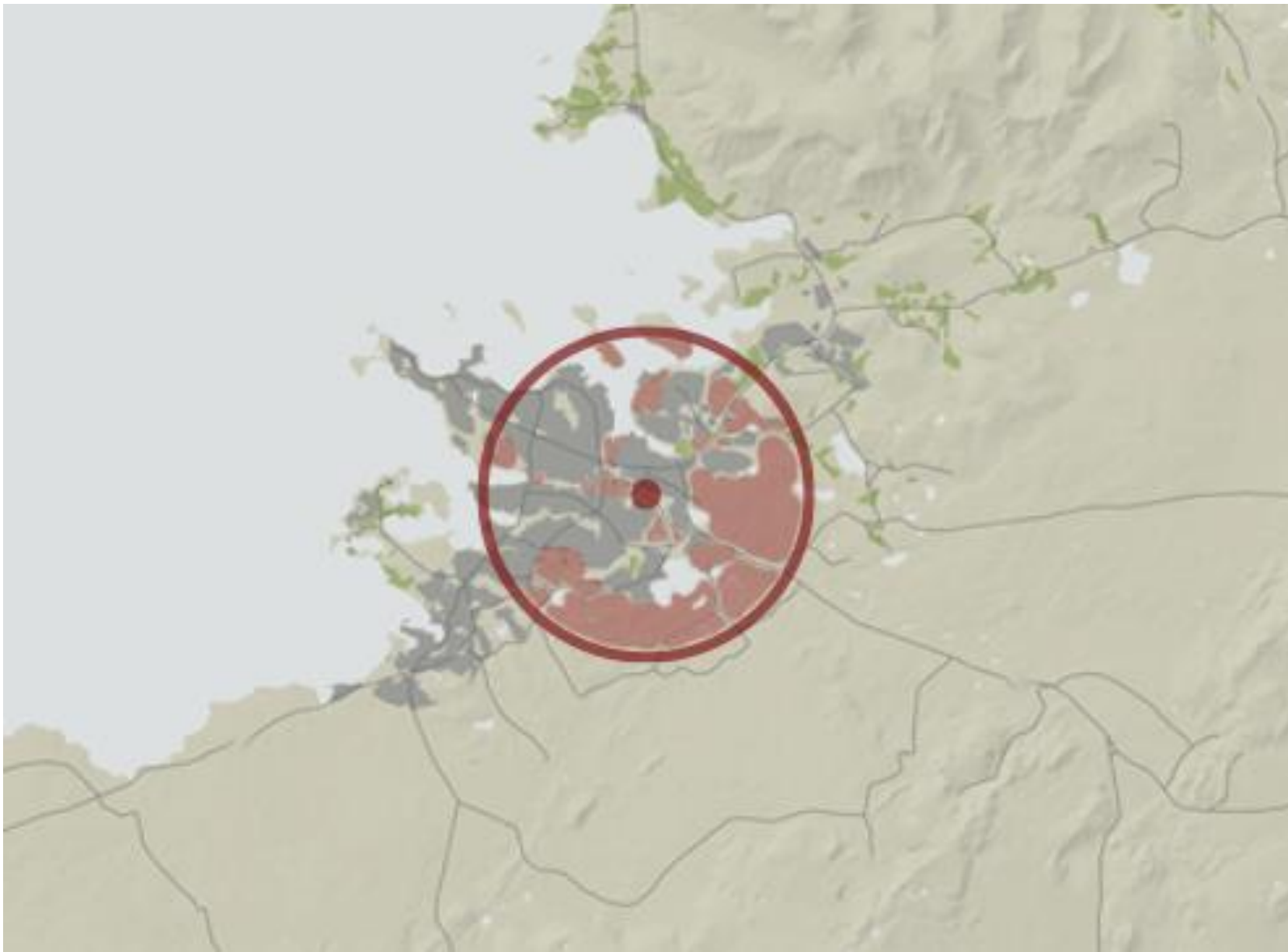
TV points out, that *to aim for the form of the circle*, is the most important goal for the Capital Area (ShaFut p.138)



The Capital Area (grey)
is *stretched* and *scattered*

It needs to be
closer to circle!

(See next slide too)



(... continued)

If Heidmörk
is freed from
***water-
protection***

***... gaps
in the circle***

***... can be
filled! (pink)***

1.3 SW-Iceland Structure Plan

Book: *Land as Resource, 1993* (in Icelandic)

Book: *Planning in Iceland, 2003*

Book: *Shaping the Future, 2016*

(All TV's books are on his <https://notendur.hi.is/tv/> under BOOKS)

1.3.1 Analysing with Overlay Maps

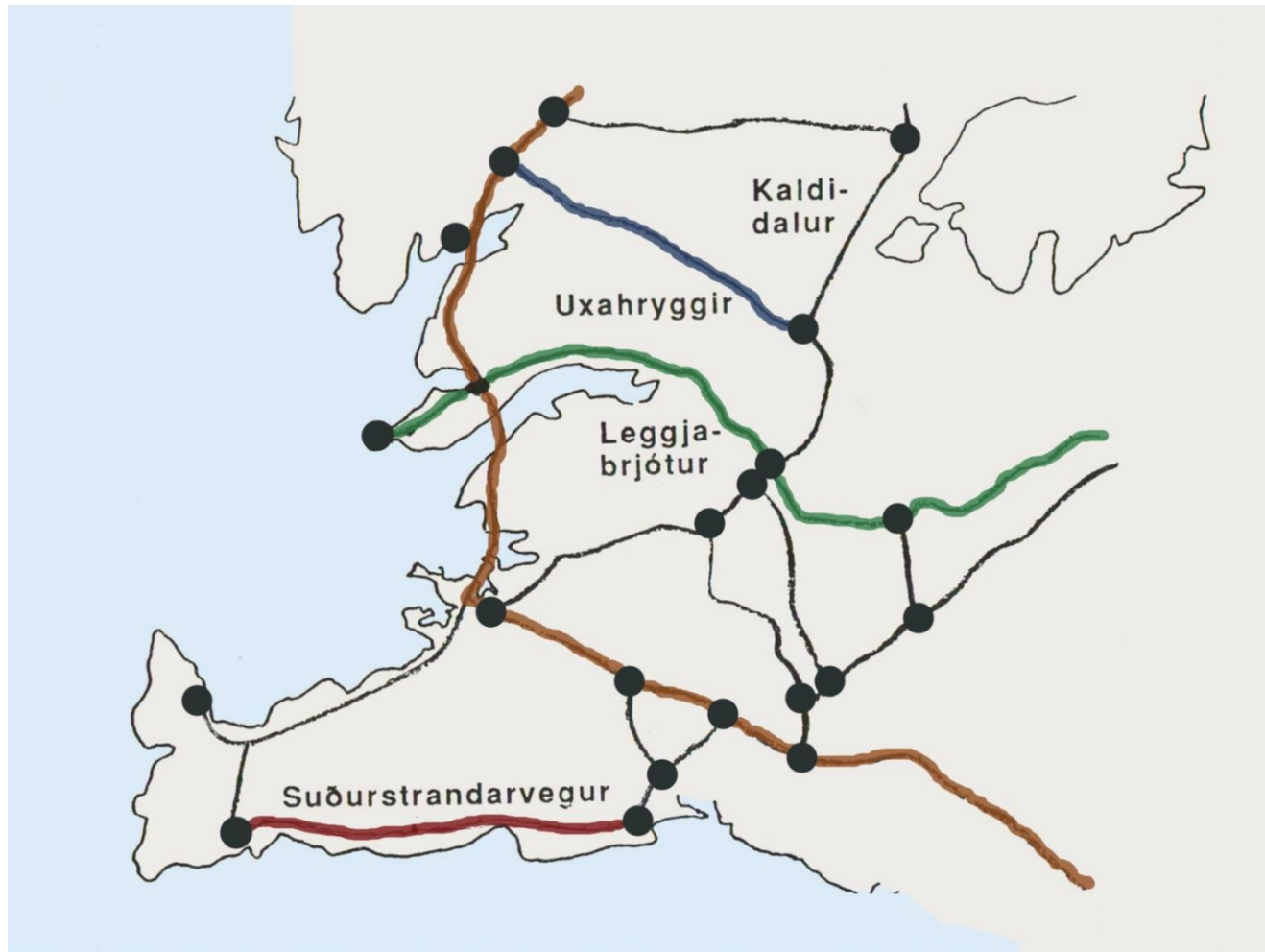


Mapping resources for tourism

Here: *Interesting* and *Beautiful* Areas (ShaFut p.132)

1.3.2 A Highway System

TV proposal: *Better road-grid and new roads* (ShFut p.134)



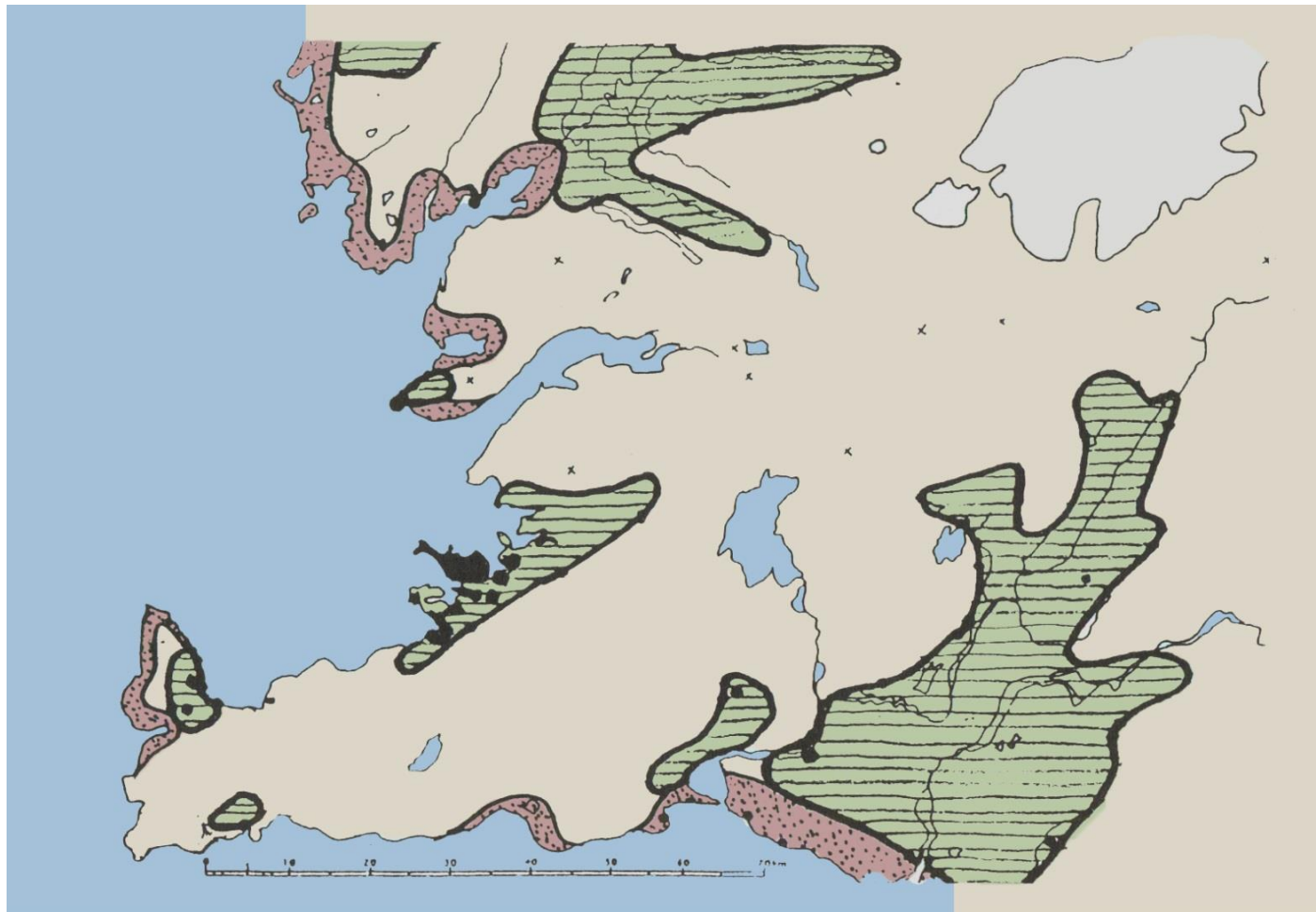
The *South Coast Road* (red),

that TV proposed, is a new road that has been built

(More roads to come)

1.3.3 Shores Lost – Green Areas Gained

TV started his studies on consequences of Global Warming in his book “Land sem auðlind” (“Land as Resource”) ... in 1993, for SW-Iceland:



*SW-Iceland –
Green: Agro-
areas that will
extend*

*Redish: Areas
likely to be
engulfed by the
ocean*

(ShFut p.78)

1.3.4 A Structure Plan for SW-Iceland



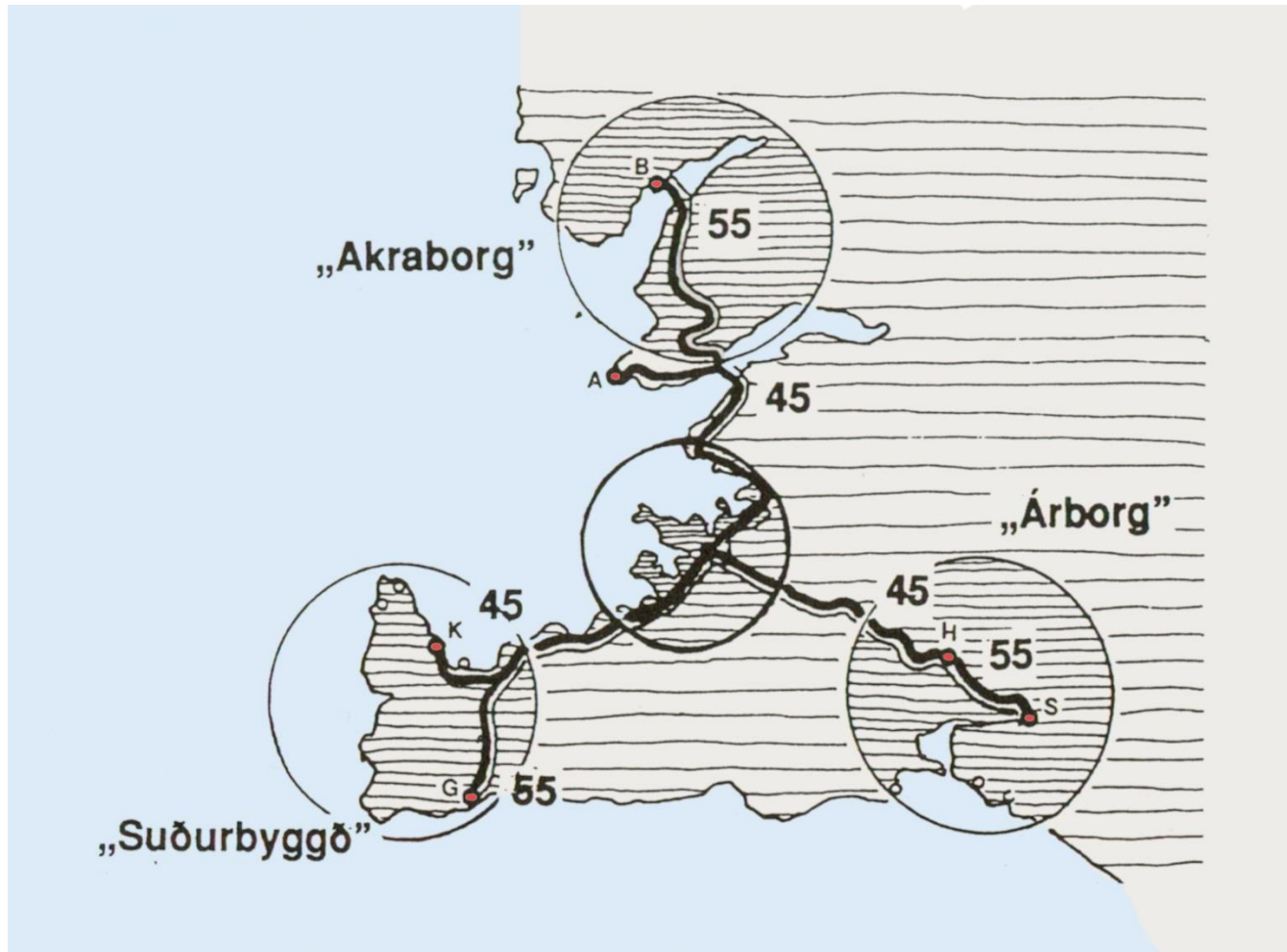
*TV and students
made a*

Structure-Plan

*... lacking for big
areas in Iceland*

(ShFut p.78)

1.3.5 Settlement System: A Triangle



A triangular structure for SW-Iceland

Roads to connect the area at edges, were missing

(ShFut p.78)

1.4 Iceland Plan

Book: An Idea on the First Iceland-Plan, 1987

Book: A Vision for Iceland in the 21st Century, 1991

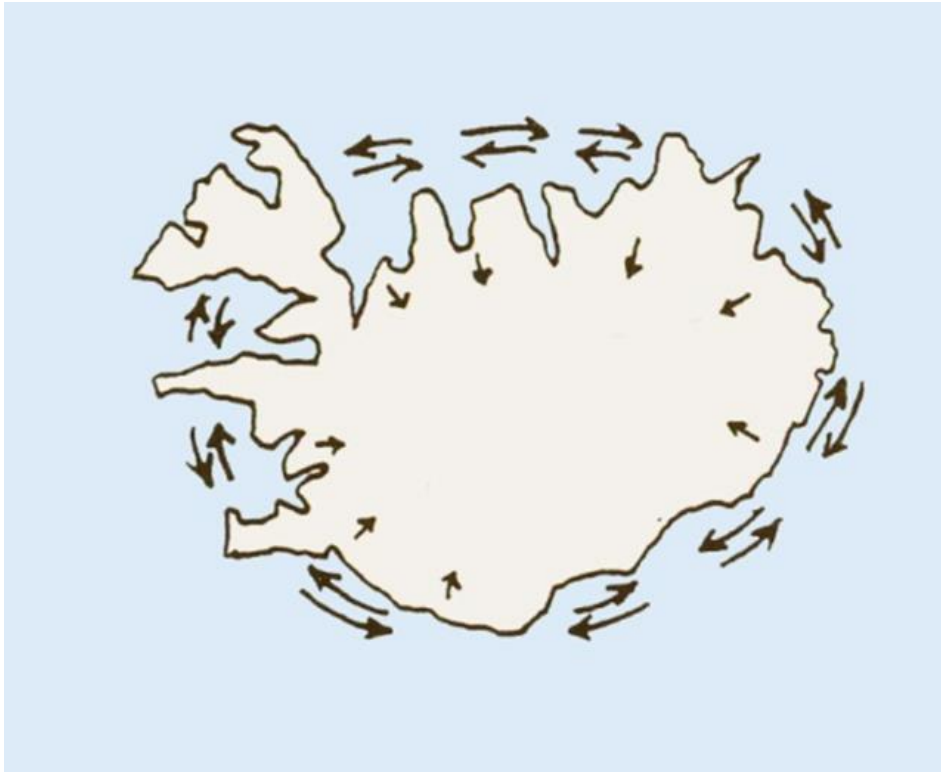
Book: Iceland the New, 1997 Co-author Birgir Jonsson

Book: Roads and Tourism, 2000

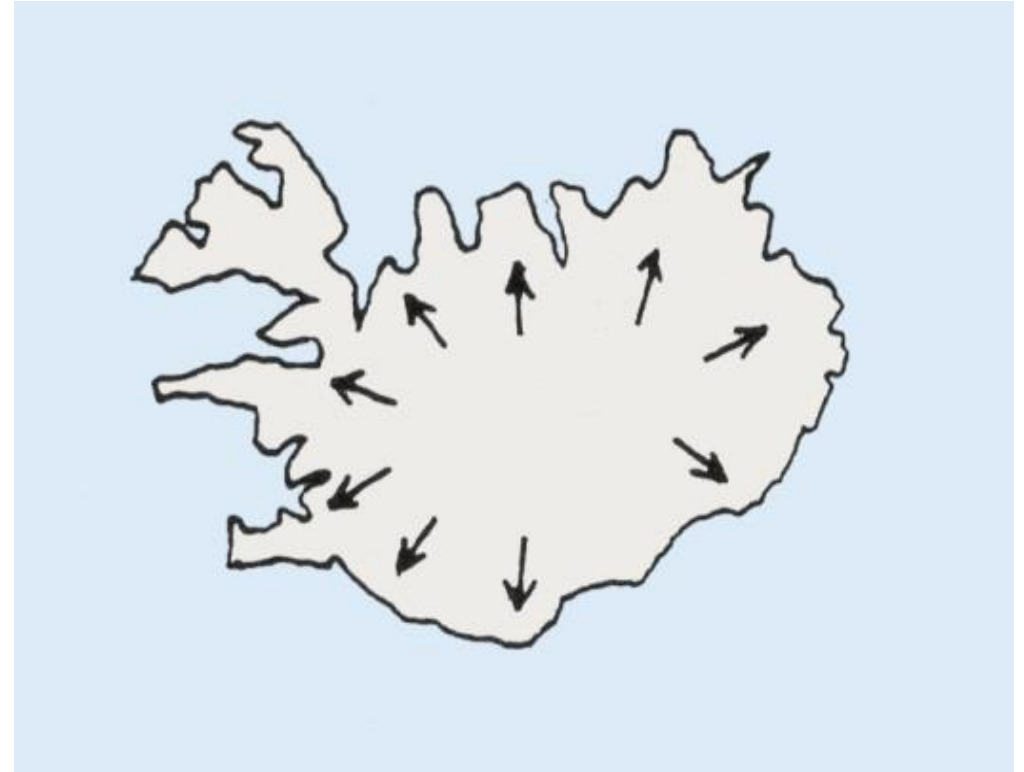
Book: Planning in Iceland, 2003

Book: Shaping the Future, 2016

1.4.1 Dev. of Settlement Patterns

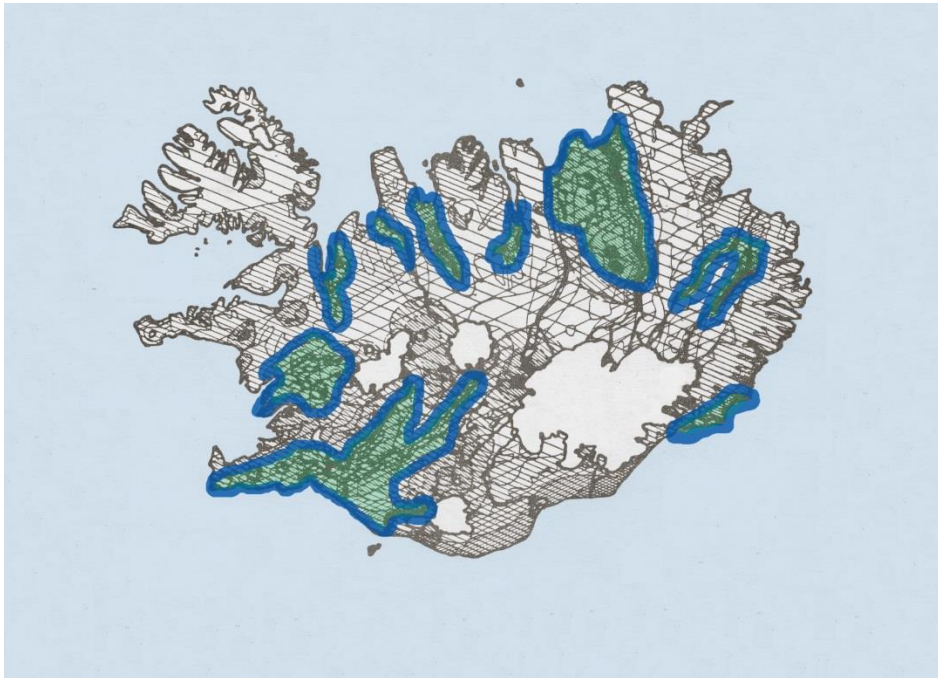


*The settlers first settled the coast.
They moved inland as their livestock grew*

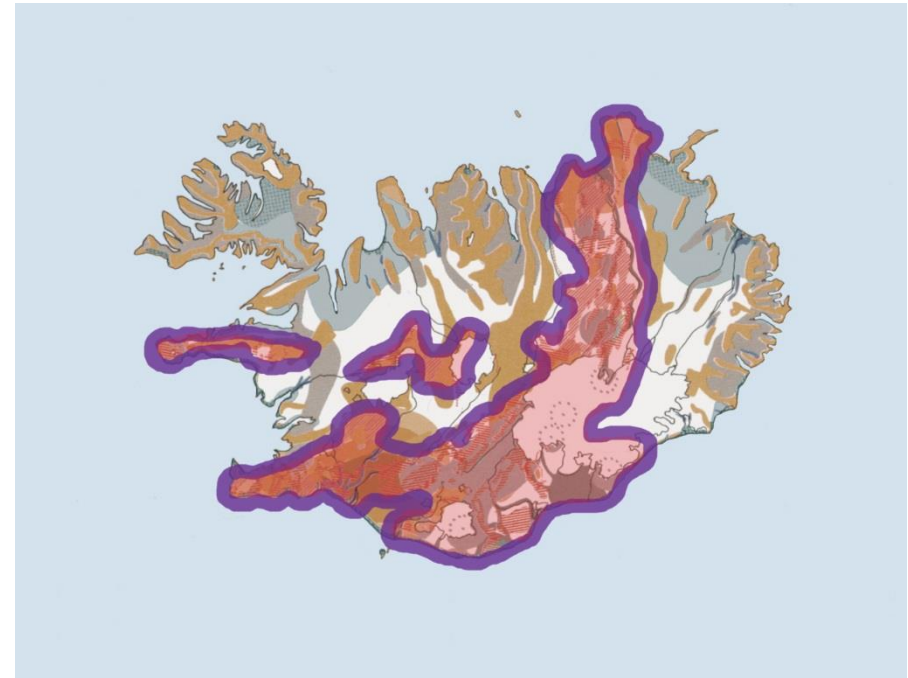


*As fisheries started, people got pulled by
them to the coasts again (ShFut p.177)*

1.4.2 Overlay: Pos/Neg Features

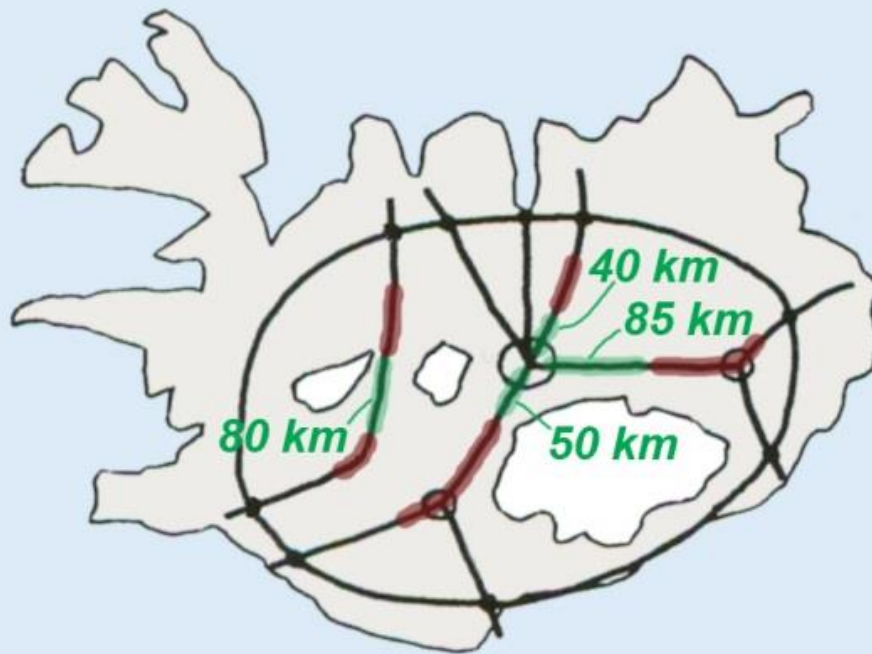


*Adding the positive features:
Best areas in green*



*Adding the most hazardous
areas: Shown in pink (ShFut p.128)*

1.4.3 Highland Highway-System

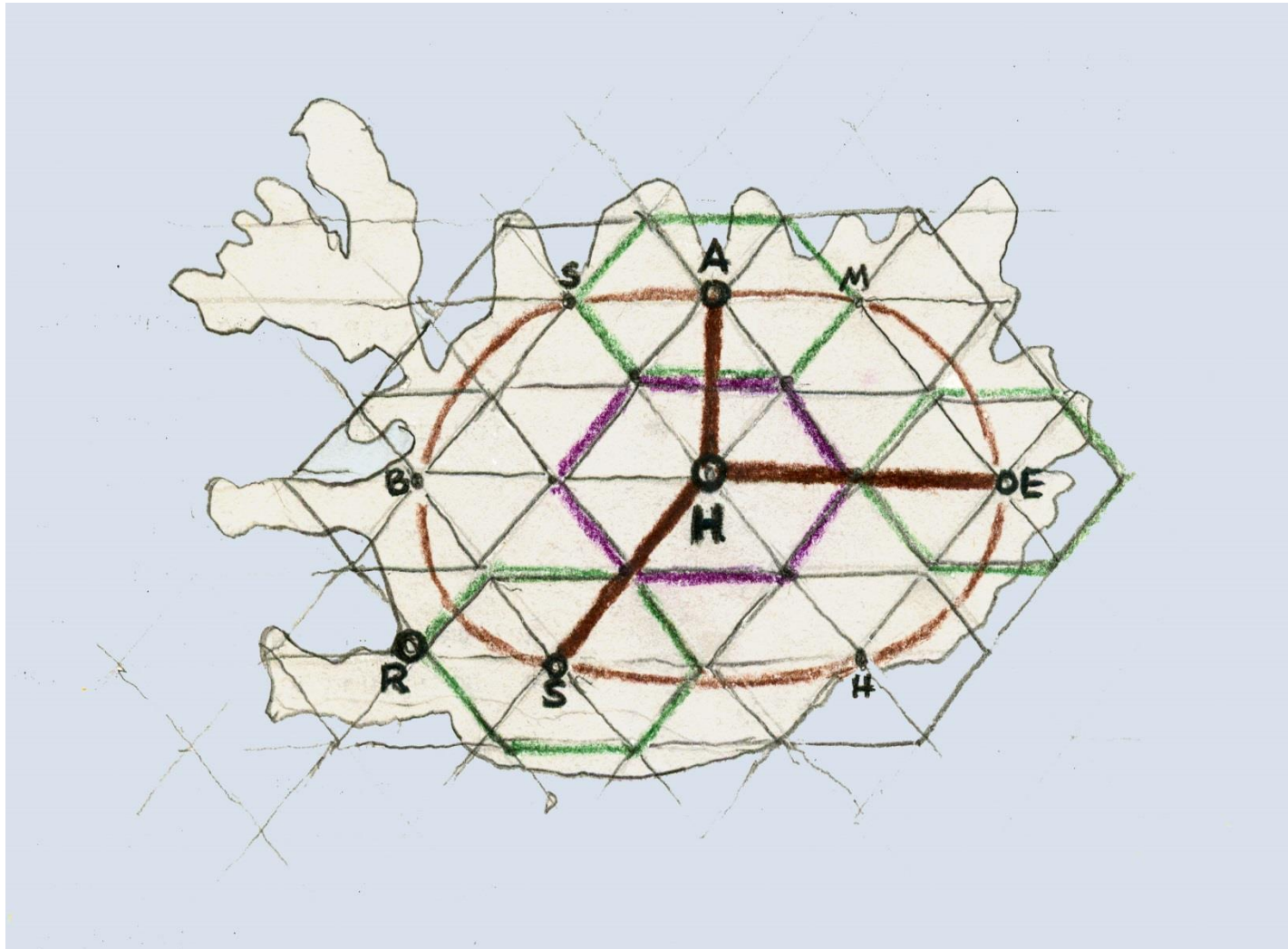


Red:
*Finished parts
of highland
roads (In 2015)*

Green:
*Pieces left
on three
main routes*

(ShFut p.154)

1.4.4 Geometry: H-City in Middle

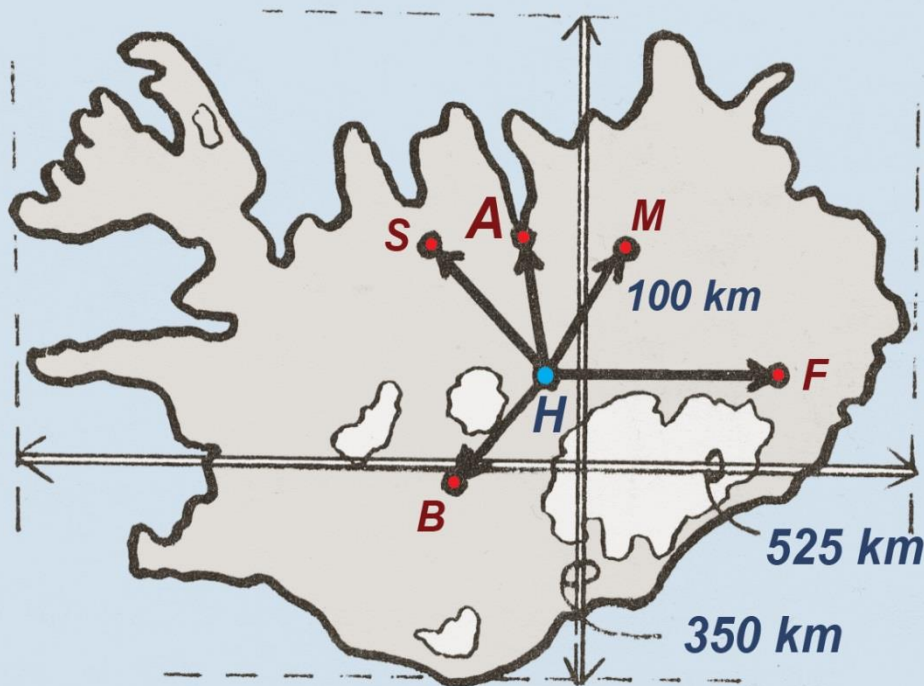


*Roads and
settlements:*

*A hexagonal
Christaller
structure*

(ShFut p.140)

1.4.5 New Capital City to Serve All

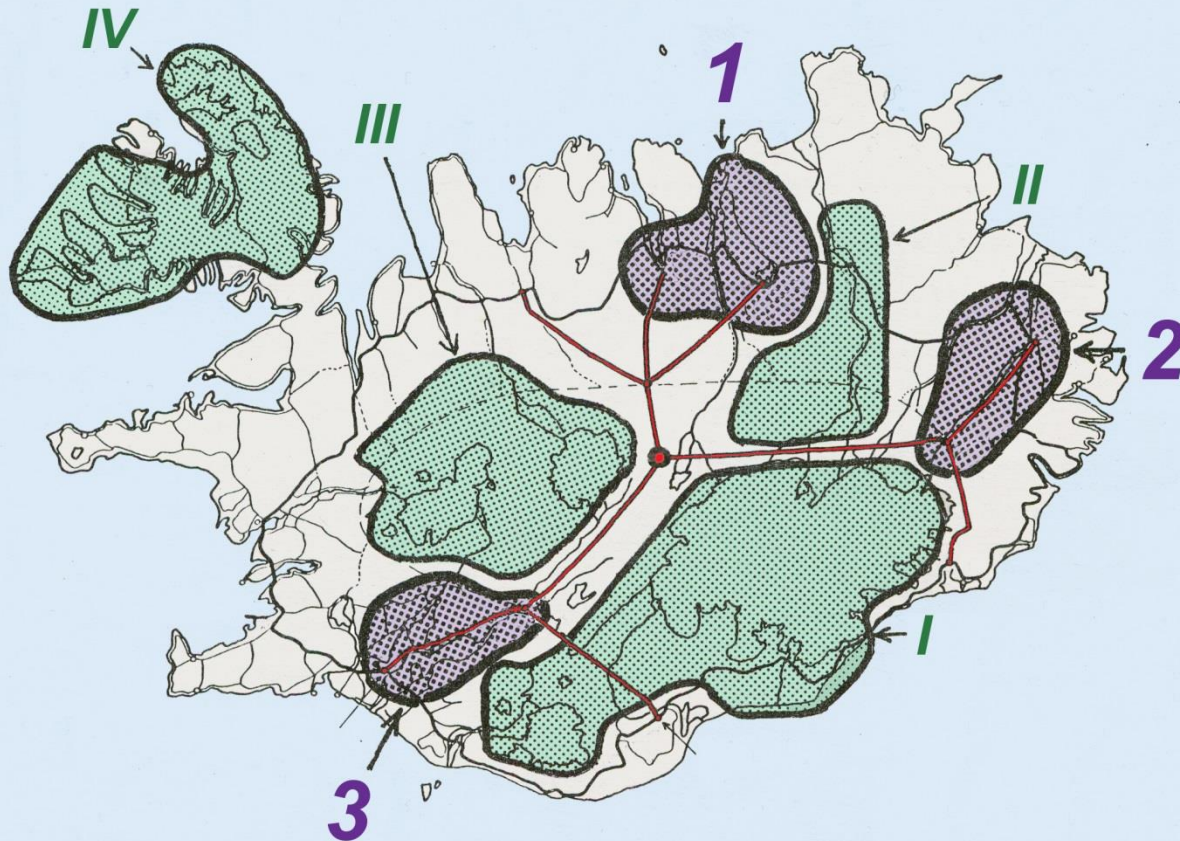


H-City:
A central Centre
in the country

***... serves
settlements
best***

(ShFut p.128)

1.4.6 The Iceland Plan Proposal

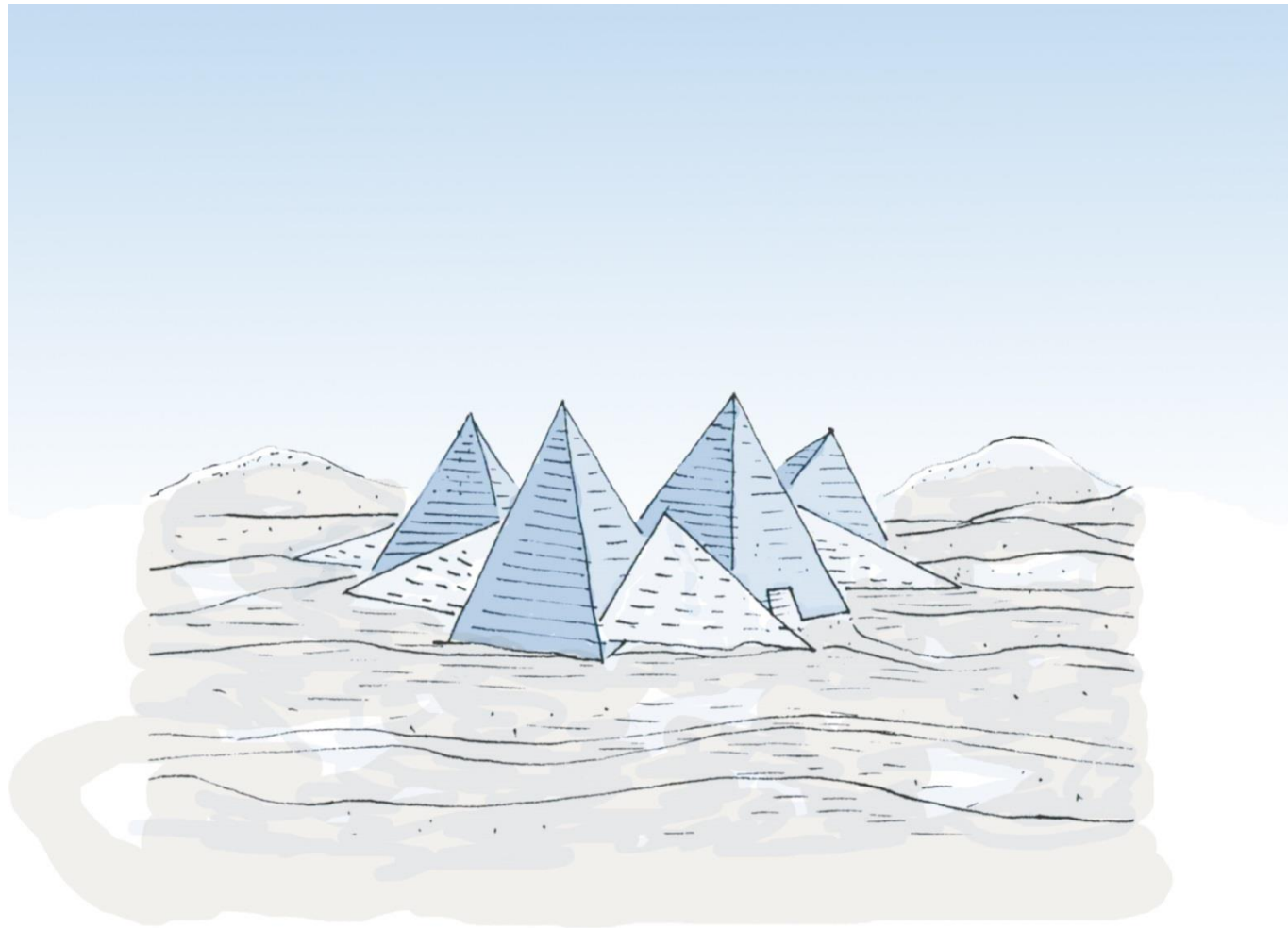


Iceland Plan:
Development
Areas 1,2,3

People Parks
I, II, III, IV

(ShFut p.128)

1.4.7 Design Theme: Mountains and Glaciers



**Haborg Design
Theme 1990...**

***Mountains,
glaciers...***

(like in the Oslo Opera)

(ShFut p.90)

1.5 Europe Plan Patterns

***Book: At the Turn of the Century - Iceland's Position
in a Changing World, 1995 (In Icelandic) Co-author A. Jonsson***

***Book: How the World will Change - with Global Warming,
2006***

1.5.1 Patterns: To Coasts + Inland to Geographic Centre of Europe



In **1995** TV and AJ predicted
a continued drive into...
Europe's central areas

At coasts of southern Europe
drive to coasts...
works against this centrality

(ShFut p.90)



At the Baltic TV/AJ predicted (in 1995)...

that coastal areas would be stronger because the

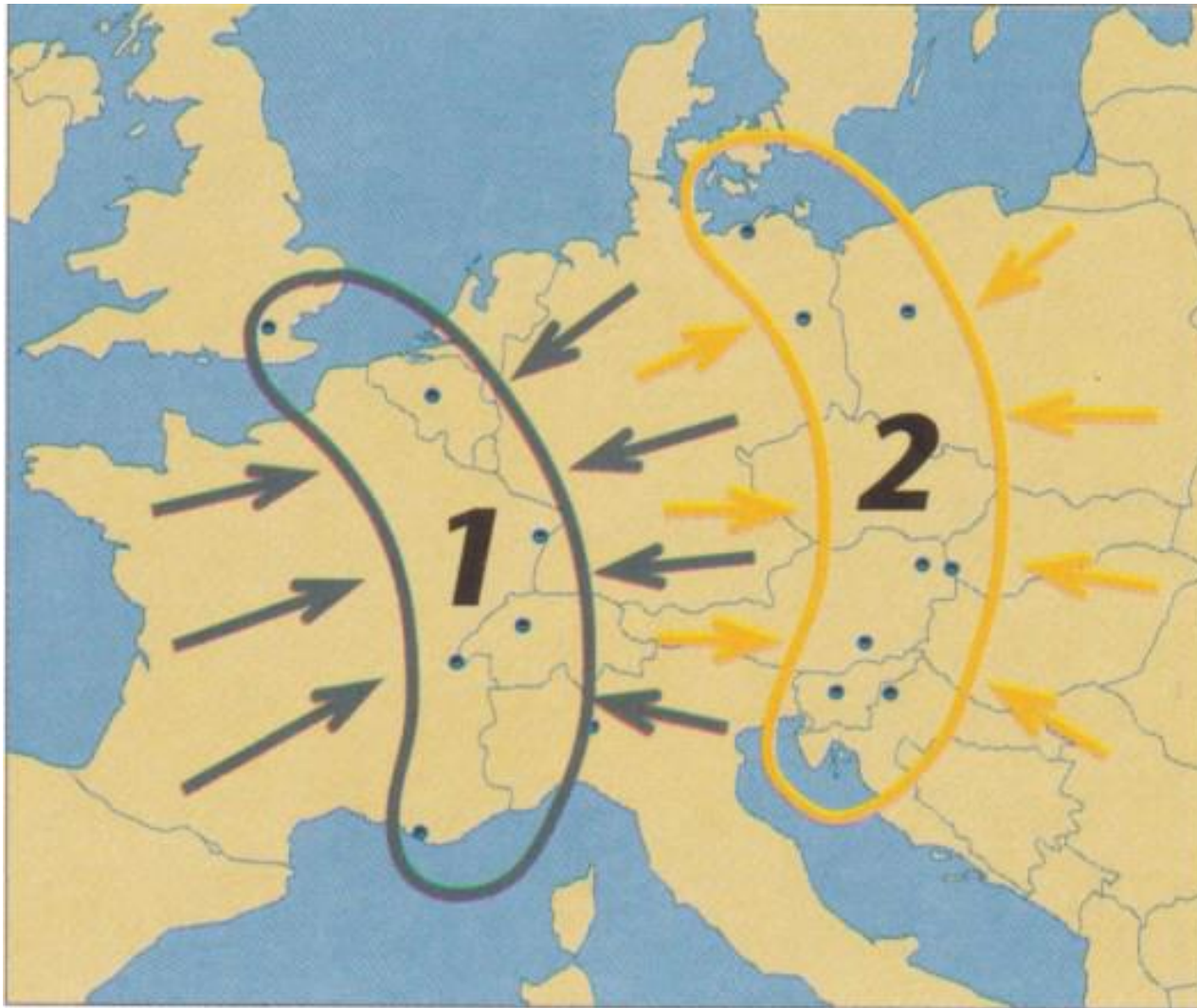
... Iron Curtain
had been lifted, and...

Karlskrona would become
“Capital of the Baltic”

... like in the Kalmar Union (in 1397-1523)

(TurnCen p.62)

1.5.2 Patterns within Europe



In **1995** TV/AJ predicted, that the...

Blue Banana 1, would attract – and that...

a **New Banana 2**, in Eastern Europe, was forming

(TurnCen p.62)



*At the South Coast
of Europe...*

*the Green Crescent
would get stronger*

(TurnCen p.62)

1.5.3 Iceland's Sea-Connections to Europe's High-Speed Trains



The High-Speed Train-Net,
as planned in 1995

*In 2019 the links north
to Scotland...*

*...most useful to Iceland!
...are not there yet (2015)!*

(TurnCen p.62)

1.6 Global Megapatterns

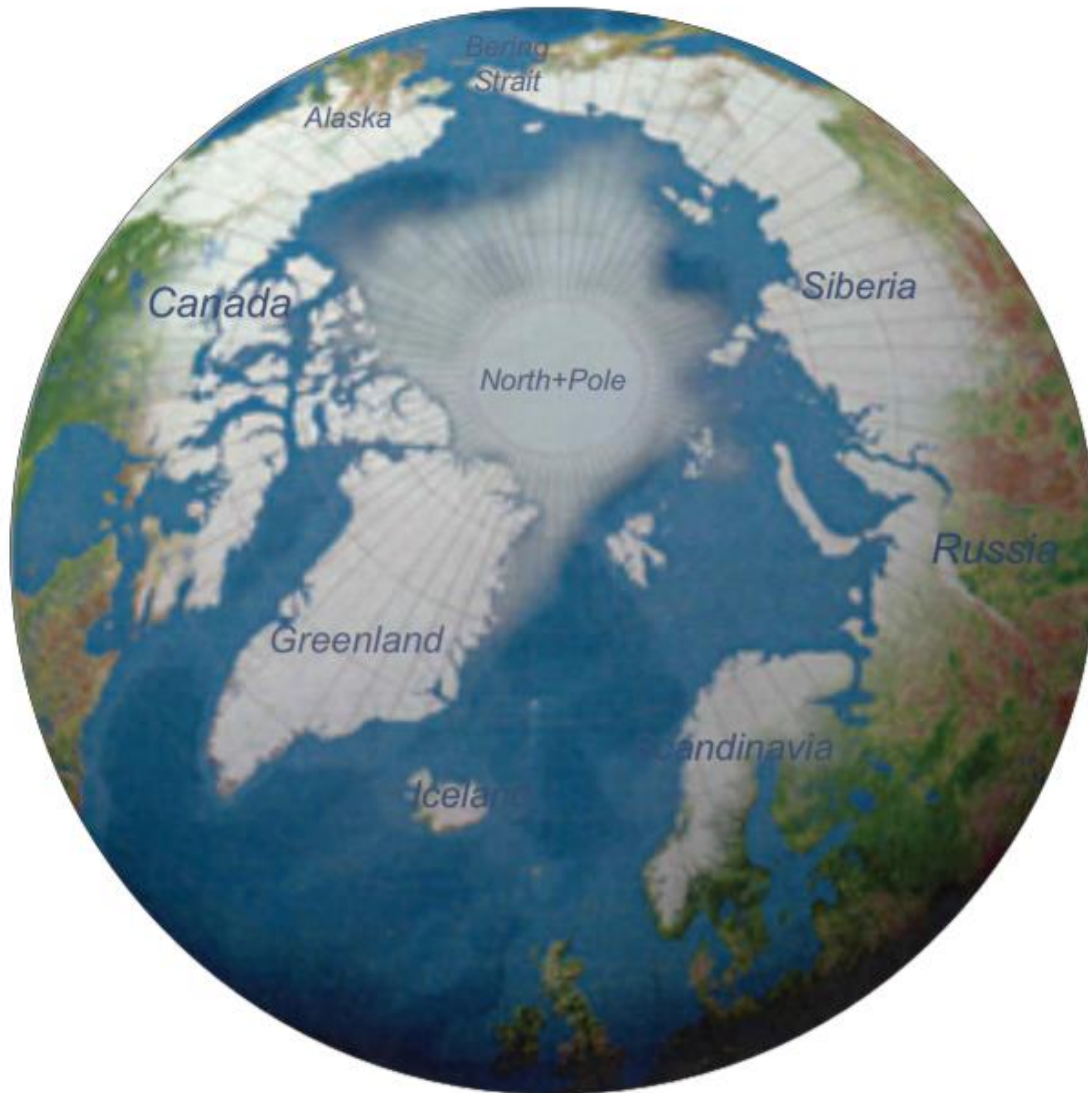
***Book: At the Turn of the Century - Iceland's Position
in a Changing World, 1995 (In Icelandic) Co-author A. Jonsson***

***Book: How the World will Change - with Global Warming,
2006***

Articles: By TV, GF Ulfarsson and SM Gardarsson

See under ARTICLES in TV's page: <https://notendur.hi.is/tv/>

1.6.1 Warming: Habitable Arctic



The grey areas on the map, are today difficult for habitation

Global warming will make them important for the future (How... p.7)

1.6.2 Migration S to N Problematic



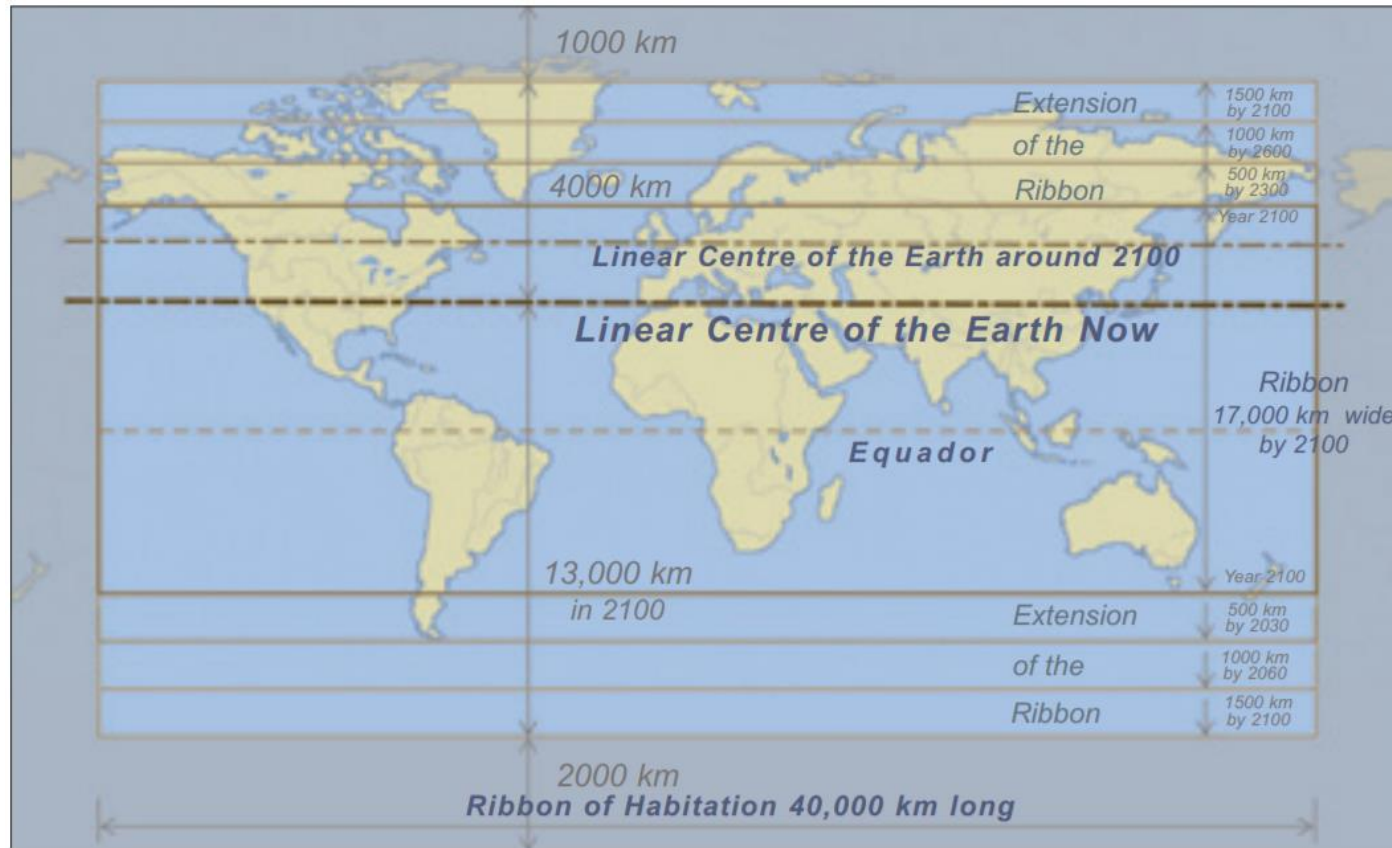
Prediction in 2006:

***Migration South to North
will become problematic!***

(How... p.57)

*(In 2006, as the book was
published, most people still saw
only few problems... but that was
to change!!!)*

1.6.3 Ribbon of Habitation Extends



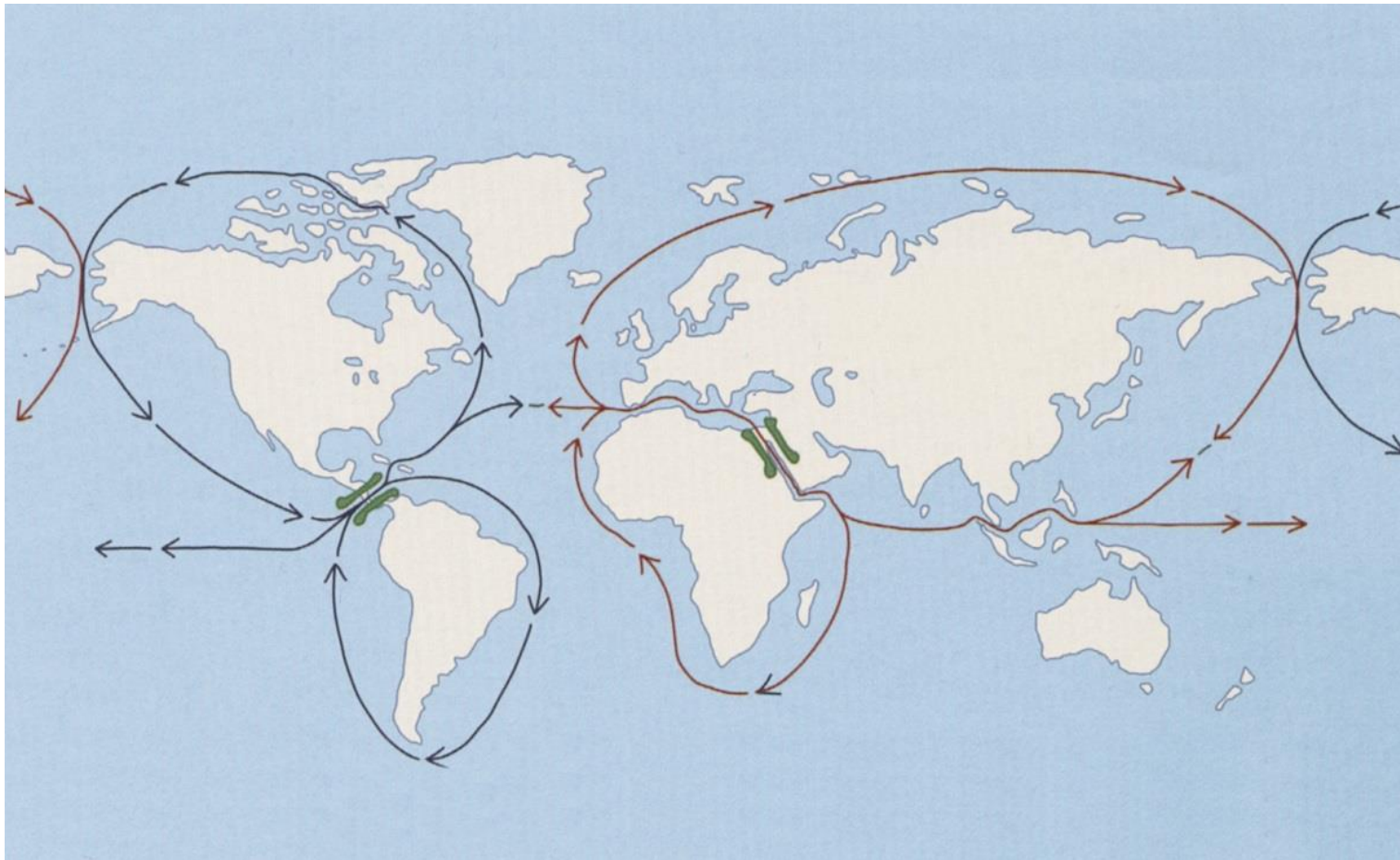
TV Prediction: *The Ribbon will expand into the Polar Areas (How... p.61)*

1.6.4 Arctic Ice-Free: Shipping Routes



As the Arctic Ocean becomes ice-free the whole year... these will be main shipping routes through the Arctic Ocean (*How... p.62*)

1.6.5 New Global Circle Shipping Routes

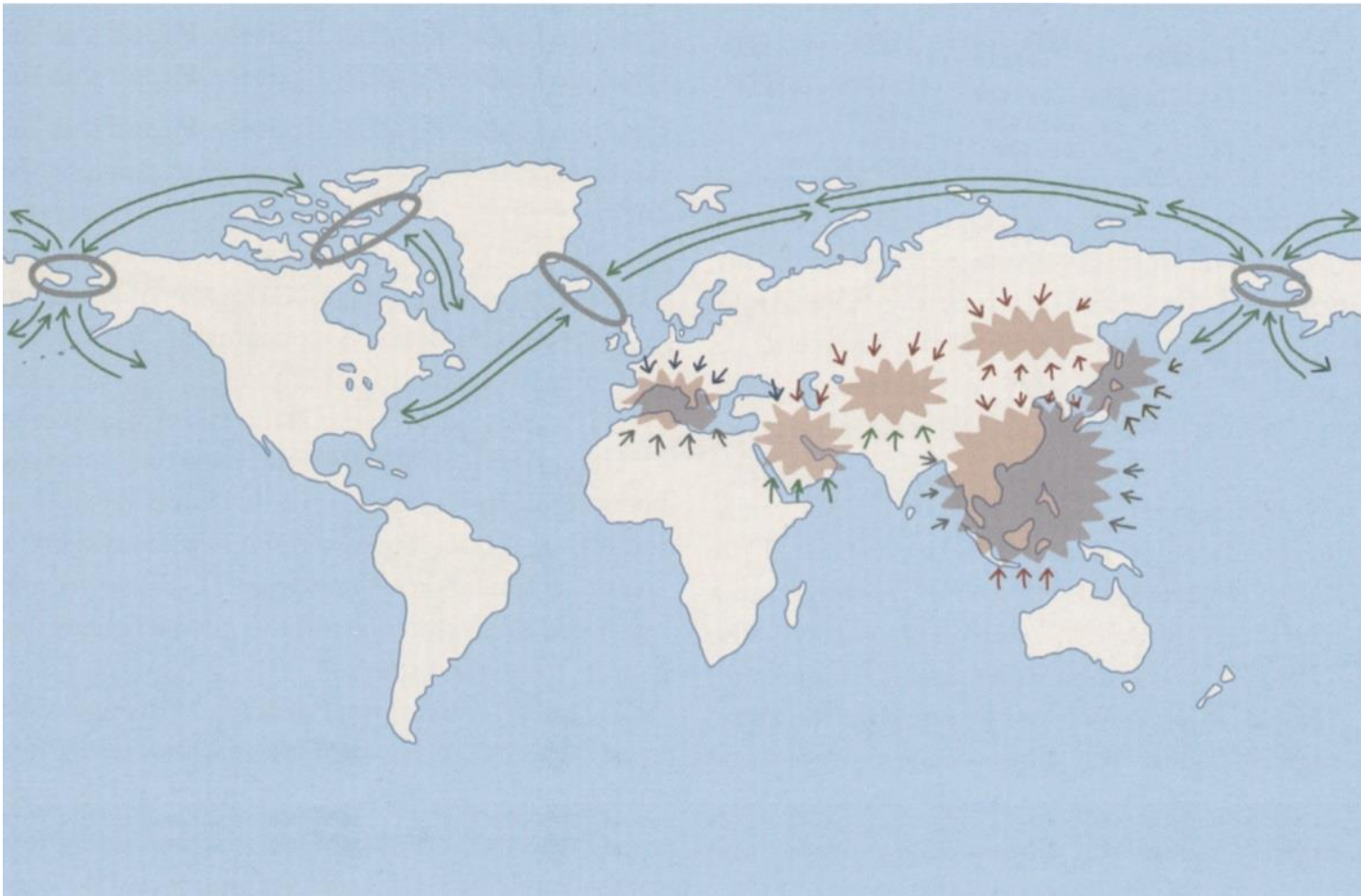


TV Prediction 2006:

*Arctic routes
will create*

*Circular Global
Shipping*

(ShFut p.168)



TV Prediction_{2006:}

Conflicts in SE-Asia

... will disturb

Global Shipping!

... this makes the

opening of

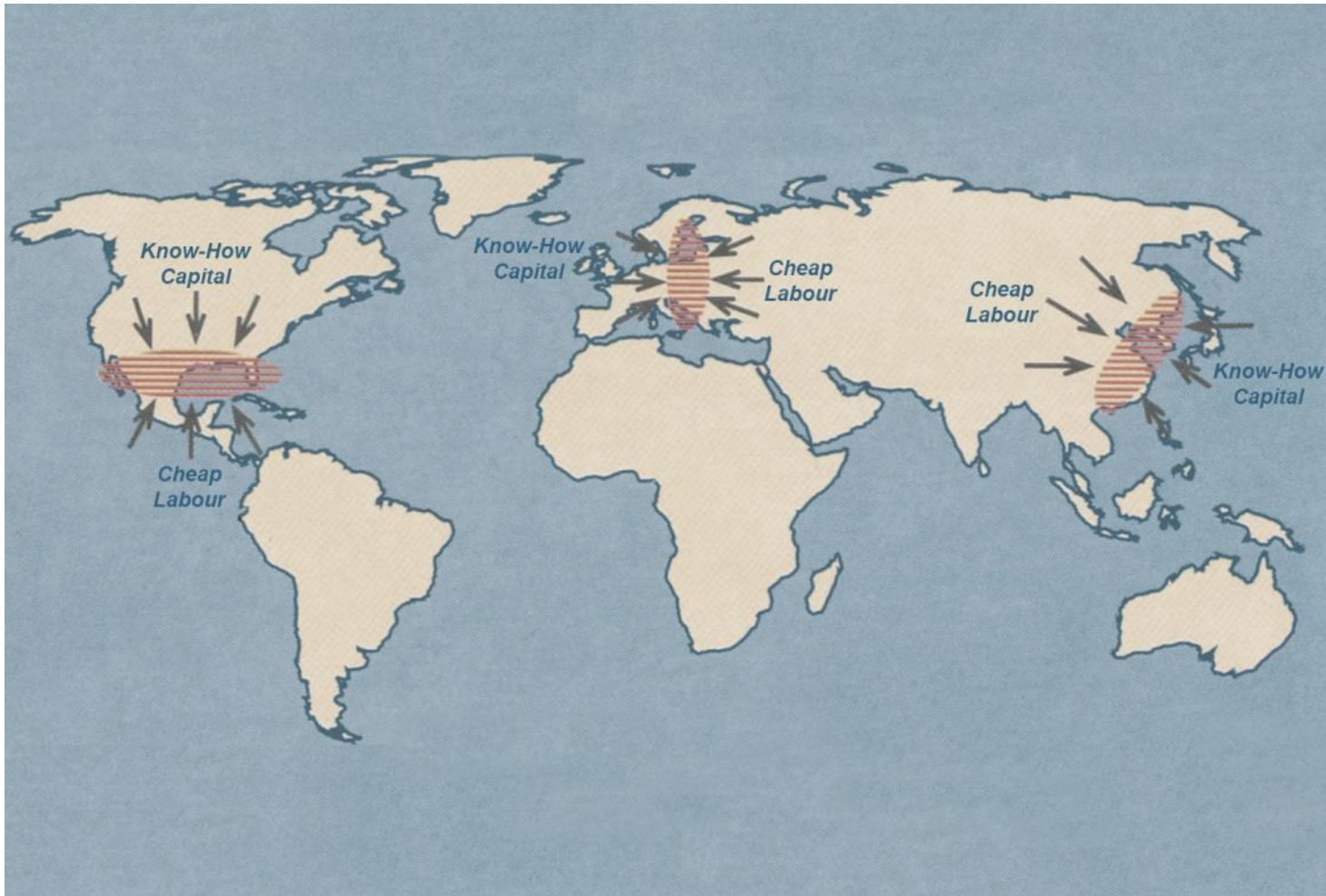
an Arctic Route...

“North of Conflict”

... very important!

(ShFut p.168)

1.6.6 Interfaces: Future Global Growth



TV prediction 1995:
**Interfaces are
Growth-Areas
in the world,
in the future**

(ShFut p.138)